



Funding Opportunities at NCI

*Center to Reduce Cancer Health Disparities
(Center for Cancer Health Equity)*

| CENTER TO REDUCE
| CANCER HEALTH DISPARITIES



NCI at Shady Grove Campus

CENTER TO REDUCE
CANCER HEALTH DISPARITIES


Center to Reduce Cancer Health Disparities

Mission


- Strengthens the NCI cancer research portfolio in basic, clinical, translational, and population-based research to address cancer disparities.
- Advise on strategic planning and policies related to cancer disparities research and diversity training.
- Leads NCI's efforts in workforce diversity through the training of students and investigators from diverse backgrounds.

NCI Center to Reduce Cancer Health Disparities 2

Diversity Training

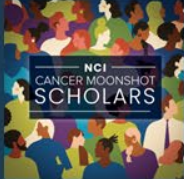


CURE
CONTINUING UMBRELLA OF RESEARCH EXPERIENCES




iCURE
Enhancing Diversity in the NCI Intramural Research Community

Workforce Diversity




NCI
CANCER MOONSHOT
SCHOLARS




EIAP
EARLY INVESTIGATOR
ADVANCEMENT PROGRAM

Partnerships

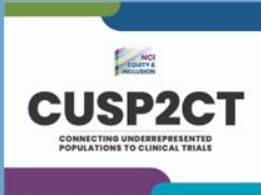
Partnership to Advance Cancer Health Equity (PACHE)



Networks




TEAM
TRANSFORMATIVE
EDUCATIONAL ADVANCEMENT
AND MENTORING NETWORK



CUSP2CT
CONNECTING UNDERREPRESENTED
POPULATIONS TO CLINICAL TRIALS

Disparities Research

Basic and translational research



Basic Research in Cancer Health Disparities Program

- **PAR-21-322 (R01), PAR-21-323 (R21), PAR-21-324 (R03)**
- **Purpose: Support innovative basic research investigating the biological and genetic contributions of cancer disparities.**
- **Projects may seek to:**
 - Investigate mechanistic studies of biological factors associated with cancer disparities
 - Develop and test new methodologies and models
 - Conduct secondary data analyses
- **Since the program's inception:**
 - Over 180 grants have been funded
 - Research supported across 18 cancer sites
 - Over 1,250 publications
- **Last submission dates in June and July, 2024**
 - Seeking reissuance, check back for updates

Funded Portfolio Facts:

- Breast and prostate cancer represent ~58% of awards
- Studies focused on African American/Black patients represent ~77% of awards
- Biological consequences of social determinants of health increasing area of interest.

Contact

Tiffany Wallace, Ph.D.
Tiffany.Wallace@nih.gov

Exploratory Grant Award to Promote Workforce Diversity in Basic Cancer Research

- **PAR-24-039 (R21)**
- **Purpose:** Enhance diversity of the cancer research workforce by supporting eligible [New Investigators](#) and [Early State Investigators](#) from backgrounds known to be underrepresented in biomedical research.
- **Goal:** Advance **basic research on the biology of cancer** while supporting eligible researchers to develop preliminary data for competitive R01 proposals.
- **Budget:** Direct Cost for 2 years; \$275k; no more than \$200k per year
- **Eligibility/Limit:** An individual cannot have a previous R01 (or equivalent) and may receive no more than 2 awards from the current, past or future iteration of this NOFO.
- **Last submission date is November 17, 2026**



Contacts

Sangeeta Ghosh, PhD
sangeeta.ghosh@nih.gov

Laritza M. Rodriguez, MD., PhD.
laritza.rodriquez@nih.gov

Cancer Moonshot Scholars program

- **RFA-CA-22-050 (R01)**
- **Purpose:** Advance cancer research, while also diversifying the pool of researchers and the approaches to cancer research that NCI funds.
- **Aligned with the goals for new phase of the Cancer Moonshotsm**
 - Inspire and support the next generation of diverse, innovative cancer researchers
 - Increase diversity of cancer research and care workforce to better resemble the communities we serve
- **Current RFA is expired**
 - Check back for updates



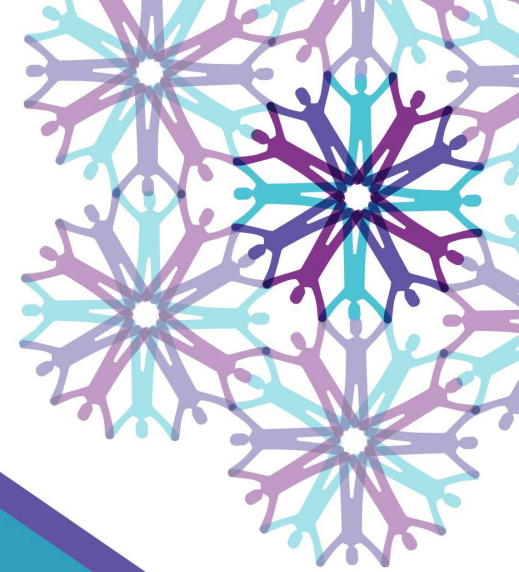
Eligibility and Research Scope for RFA-CA-22-050

1. Proposed research must align with the NCI's scientific mission
2. Contact PIs must be an Early-Stage Investigator
 - MPI applications are allowed, however only the contact PI must be an ESI
3. Contact PIs must include an Institutional Eligibility Letter describing their contribution to the RFA goals

NCI Mission and Scope



<https://www.cancer.gov/about-nci/overview>



**NATIONAL
CANCER
INSTITUTE**

cancer.gov/crchd

Stay Connected

Have questions?

Tiffany.Wallace@nih.gov

More information



@ncicrhd



NCI Center to Reduce Cancer
Health Disparities (CRCHD)



<http://crchd.cancer.gov>